

HS 2000

OWNERS MANUAL



9 X19 mm
Parabellum



READ THE INSTRUCTIONS AND
WARNINGS IN THIS MANUAL CAREFULLY
BEFORE USING THIS FIREARM.

SCANNED AND BROUGHT TO YOU BY WWW.XD-HS2000.COM
YOUR SOURCE FOR INFORMATION AND PRODUCTS XD.

IMPORTANT:

THE SAFEST PISTOL IS THE ONE THAT IS FULLY UNLOADED.

SCANNED AND BROUGHT TO YOU BY WWW.XD-HS2000.COM

YOUR SOURCE FOR INFORMATION AND PRODUCTS XD.

SAFETY WARNINGS

- Carefully read this owners manual before handling the pistol.
- Only use the pistol after you have fully read and understand these instructions.
- Observe all notes on handling and operation of the pistol. Failure to do so may result in injury or death of the operator or bystanders.
- When passing the pistol between persons, the firearm must be unloaded and the slide must be locked open.
- Do not use the pistol if you have previously ingested alcohol, drugs or medication.
- Always treat the pistol as if it were loaded and ready to fire.
- Never point the pistol at anyone during handling.
- Always point the pistol in a safe direction.
- Before handling and before cleaning, the pistol must be checked to ensure that:
 - √ The magazine is unloaded and removed from the pistol.
 - √ The slide is locked to the rear.
 - √ The pistol is unloaded (cartridge chamber empty).
 - √ The barrel is free of obstructions.
- Keep your finger off the trigger when loading, unloading or otherwise handling the pistol. Always place the trigger finger outside of the trigger guard when holding the pistol.
- Place your finger on the trigger only when your sights are aimed at the target and you have decided to fire.
- Never use force when handling, disassembling, cleaning and reassembling the pistol.
- Disassemble the pistol only as far as described in this manual.
- Always wear eye and ear protection when using the pistol.
- Ensure bystanders are also wearing ear and eye protection.
- Only use factory loaded and undamaged cartridges of the correct caliber.
- Always ensure that the muzzle area is free of obstacles during firing.
- Take into account the fact that bystanders are also endangered.
- Store the firearm and ammunition in separate places.
- HS America does not assume any liability for events resulting from the disregarding this manual, improper handling, negligence, improper treatment, use of improper or reloaded ammunition, unauthorized exchange of parts or manipulations of the pistol.
- Read this operators manual and be familiar with the safe handling of this firearm before using it. Keep this manual with the pistol.

SAFETY

INFORMATION

*Before you take your new HS 2000 out of the box,
please read the following information.*

SCANNED AND BROUGHT TO YOU BY WWW.XD-HS2000.COM
YOUR SOURCE FOR INFORMATION AND PRODUCTS XD.



It is vital to your safety and the safety of others.

TABLE OF CONTENTS

ALWAYS STORE YOUR PISTOL AND AMMUNITION IN SEPARATE
LOCKED RECEPTACLES, OUT OF SIGHT AND REACH OF CHILDREN.

SCANNED AND BROUGHT TO YOU BY WWW.XD-HS2000.COM
YOUR SOURCE FOR INFORMATION AND PRODUCTS XD.

CONTENTS	PAGE
<i>Safety warnings</i>	2
<i>Introduction</i>	3
<i>Table of contents</i>	4
<i>General Description</i>	5
<i>Nomenclature</i>	6
<i>Assembly groups</i>	7
<i>10 rules of firearm safety</i>	8 & 9
<i>Operation of safety devices</i>	10
<i>Approved ammunition</i>	11
<i>Loading magazines</i>	12
<i>Loading the pistol</i>	13
<i>Sight picture / Firing the pistol</i>	14
<i>9x19mm Ballistics Graph</i>	15
<i>Reloading during shooting</i>	16
<i>Unloading the pistol</i>	17
<i>Field Stripping</i>	18,19 & 20
<i>Magazine disassembly</i>	21
<i>Cleaning the field stripped pistol</i>	22
<i>Inspection</i>	23 & 24
<i>Inspection/Reassembly</i>	25
<i>Transportation and storage</i>	26
<i>Troubleshooting</i>	27
<i>Sights</i>	28
<i>Warranty Statement</i>	29 & 30
<i>Specifications</i>	31
<i>Parts diagram</i>	32 & 33
<i>Cut away</i>	34
<i>Additional warnings</i>	35

FIREARMS SAFETY IS YOUR RESPONSIBILITY

PISTOLS are classified as FIREARMS and are sold by us with the specific understanding that we are not responsible in any manner whatsoever for their safe handling or resale under local laws and regulations. **HS America, LLC** shall not be responsible in any manner whatsoever for malfunctioning of the firearm, for physical injury or for property damage resulting in whole or in part from (1) criminal or negligent discharge, (2) improper or careless handling, (3) unauthorized modifications, (4) defective, improper, hand-loaded, or reloaded ammunition, (5) corrosion, (6) neglect, or (7) other influences beyond our direct and immediate control. This limitation applies regardless of whether liability is asserted on the basis of contract, negligence or strict liability (including any failure to warn). Under no circumstances shall **HS America, LLC** be liable for incidental or consequential damages, such as loss of use of property, commercial loss and loss of earnings or profits.

INTRODUCTION

SCANNED AND BROUGHT TO YOU BY WWW.XD-HS2000.COM
YOUR SOURCE FOR INFORMATION AND PRODUCTS XD.

ALWAYS INSTRUCT CHILDREN TO RESPECT FIREARMS. IF YOU TEACH YOUR CHILDREN TO SHOOT, TEACH THEM TO USE THE PISTOL PROPERLY, AND ALWAYS SUPERVISE THEM CLOSELY, STRESSING SAFETY.

CONGRATULATIONS

You are now the proud owner of one of the world's finest and most superbly engineered firearms. The HS 2000 semiautomatic pistol has been designed and crafted to meet the stringent requirements of law enforcement agencies and the military. Used with the proper ammunition and given reasonable maintenance, it will serve you dependably for many years.

To make sure you get the best performance and reliability from your pistol, please read and follow the procedures outlined in this manual. You'll notice that we place a heavy emphasis on safe firearms handling. Like any other mechanical devices, such as automobiles or power tools, high quality firearms are inherently safe unless they are handled in a careless or irresponsible manner. Always remember that you, the owner, are the ultimate safety device.

GENERAL DESCRIPTION

The HS 2000 safety locked action pistol, with its world class design, combines all the features demanded of the modern handgun of today - and of tomorrow.

- Extremely light weight / high strength design
- Four redundant safeties
- Excellent performance and reliability
- Manufactured using the best technology and materials available in the world

Manufactured by advanced state-of-the-art production processes, the HS 2000 is a mechanically locked, short recoil operated pistol featuring an automatic firing pin, block / drop safety, grip safety, trigger safety and out of battery safety. Firing takes place with each pull of the trigger until the magazine is empty. The slide stays open after you've fired the last shot. The action of the HS 2000 pistol utilizes a tilting barrel design in which the barrel and slide are locked together at the moment of firing. After firing, the barrel and slide recoil to the rear a short distance while still locked together. After this initial movement, the barrel tilts downward from its locked position, permitting full recoil of the slide and the extraction and ejection of the spent cartridge case. The user of this or any auto loading pistol must always remember that when fired, it automatically reloads and recocks itself, so that simply pulling the trigger will fire the pistol again. Therefore, an auto loading pistol user must be particularly, conscious to always keep the pistol pointed in a safe direction. You should become familiar with your pistol and its operation before using any live ammunition or actual shooting. Study the instructions carefully and make sure you understand the pistol's operating guidelines.

NOMENCLATURE

NEVER LEAVE A PISTOL UNATTENDED, SOMEONE, ESPECIALLY A CHILD, MAY FIRE IT BELIEVING IT TO BE A TOY.



SCANNED AND BROUGHT TO YOU BY WWW.XD-HS2000.COM
YOUR SOURCE FOR INFORMATION AND PRODUCTS XD.

- | | |
|----------------------------------|--|
| 1) Night Sights Available | 10) Safety Locked Action |
| 2) Low Profile Dove Tail Sights | 11) Thumb Rest |
| 3) Captive Recoil Spring | 12) Light Weight Ultra High Impact Polymer Frame |
| 4) Grip Safety | 13) Drop Free Magazine |
| 5) Loaded Chamber Indicator | 14) Firing Pin Block / Drop Safety |
| 6) Firing Pin Status Indicator | 15) Vertically Grooved Target Trigger |
| 7) Trigger Safety | 16) Slide Catch Lever |
| 8) Grooved Trigger Guard | |
| 9) Ambidextrous Magazine Release | |

ASSEMBLY GROUPS

ALWAYS HANDLE YOUR PISTOL AS IF IT WERE LOADED
SO THAT YOU NEVER FIRE IT ACCIDENTALLY.

SCANNED AND BROUGHT TO YOU BY WWW.XD-HS2000.COM
YOUR SOURCE FOR INFORMATION AND PRODUCTS XD.

- 17) Heat Treated, Fully Machined, Bruniral Coated, Milled Slide



- 18) Cold Hammer Forged Steel Barrel



- 19) Captive Dual Tension Recoil Spring with Stand-Off Device



- 20) Light Weight, Ultra High-Impact Polymer Frame
21) Over Sized Heat-Treated Steel Slide Rails
22) Grooved Slide Take Down Lever



- 23) Chrome Plated Drop Free 10 Round Magazine



High Capacity Law Enforcement Magazines Available

10 RULES OF FIREARM SAFETY

SCANNED AND BROUGHT TO YOU BY WWW.XD-HS2000.COM
YOUR SOURCE FOR INFORMATION AND PRODUCTS XD.

BASIC SAFETY RULES OF FIREARMS USE AND HANDLING

• KNOW YOUR FIREARM •

1. **YOU MUST UNDERSTAND HOW TO PROPERLY HANDLE YOUR FIREARM AS WELL AS UNDERSTAND ALL MECHANICAL CHARACTERISTICS OF IT.** You should be completely familiar with and understand your firearm with regard to proper loading, handling and carrying procedures in order to avoid accidental discharge of your firearm. You should always consider your firearm and/or any firearm, to be loaded.
2. **NEVER KEEP YOUR FIREARM LOADED WHEN NOT IN USE OR WHEN STORED.** Your firearm should be stored UNLOADED and separate from any ammunition. Guns and ammunition should always be stored separately in locked containers to prevent access and use by unauthorized adults and CHILDREN .
3. **THE MUZZLE OF YOUR FIREARM SHOULD ALWAYS BE KEPT POINTED IN A SAFE DIRECTION.** Never point your firearm at yourself or another person or at any object or hard surface which could possibly cause a ricochet. This includes discharging your firearm at water or any other flat surface.
4. **YOU SHOULD ALWAYS KNOW YOUR TARGET AND WHAT IS BEYOND YOUR TARGET.** If shooting at a target range, be sure that the backstop is adequate to safely stop your bullets.
5. **NEVER PUT YOUR FINGER ON THE TRIGGER OF YOUR FIREARM UNTIL YOU ARE ABSOLUTELY READY TO DISCHARGE YOUR FIREARM.**

10 RULES OF FIREARM SAFETY

SCANNED AND BROUGHT TO YOU BY WWW.XD-HS2000.COM
YOUR SOURCE FOR INFORMATION AND PRODUCTS XD.

6. **YOU SHOULD ALWAYS BE SURE THAT THE BARREL OF YOUR FIREARM IS COMPLETELY CLEAR OF ANY OBSTRUCTIONS BEFORE DISCHARGING YOUR FIREARM.** If your firearm seems to operate or function in any abnormal manner CEASE FIRING, unload and inspect your firearm for obstructions or mechanical problems. NEVER try to clear a barrel obstruction by discharging your firearm.
7. **ALWAYS USE PROPER CALIBER, HIGH QUALITY NEW PRODUCTION AMMUNITION IN YOUR FIREARM.** NEVER use "reloaded" or "re-manufactured" ammunition. The use of improper ammunition is dangerous and will void the warranty of your HS pistol.
8. **EYE PROTECTION AND EAR PROTECTION SHOULD ALWAYS BE WORN BY YOU AND ANYONE NEAR YOU WHEN DISCHARGING ANY FIREARM.**
9. **NEVER USE OR HANDLE A FIREARM WHEN UNDER THE INFLUENCE OF ALCOHOL OR DRUGS.** This includes any over the counter or prescribed drugs that might affect your coordination or judgment. Use of a firearm under the influence of alcohol or drugs is extremely dangerous and constitutes a serious criminal offense.
10. **NEVER TRANSPORT A LOADED FIREARM.** A suitable carrying case or scabbard should always be used when transporting your unloaded weapon to or from your shooting range or area.

OPERATION OF SAFETY DEVICES

BECOME FAMILIAR WITH YOUR PISTOL, UNDERSTAND
THE INSTRUCTIONS FULLY BEFORE USING IT.

SAFETY DEVICES

SCANNED AND BROUGHT TO YOU BY WWW.XD-HS2000.COM
YOUR SOURCE FOR INFORMATION AND PRODUCTS XD.

The HS 2000 has no traditionally and externally located manual safety lever. Therefore make sure that the trigger is only touched if you intend to fire.

- 1. GRIP SAFETY**, It is located on the upper rear portion of the pistol's grip. Properly gripping the HS 2000 in your shooting hand will automatically press the grip safety. Once the grip safety is depressed, the sear can disengage from the firing pin if the trigger and trigger safety are pulled.
Note: While the grip safety is engaged, the entire action of the pistol is locked.
- 2. TRIGGER SAFETY**, It is incorporated into the trigger in the form of a lever, and in the untouched state locks the trigger from moving backward. The trigger can only be pulled if depressed together with the trigger safety. The safety locked action pistol is, therefore, ready for firing at any time once the grip safety is disengaged and the trigger with trigger safety is pulled.
- 3. FIRING PIN BLOCK/DROP SAFETY**, A spring loaded pin projects into the firing pin cut-out, and blocks the movement of the firing pin. This safety is only released when the grip safety is disengaged, the trigger safety is disengaged, and the trigger is pulled back.
- 4. OUT OF BATTERY SAFETY**, A cut out in the slide will only allow the trigger bar to disengage the sear from the firing pin only if the side is fully forward and in battery.

THE SAFETY DEVICES 1, 2, and 3 above are designed to prevent the weapon from unintentional discharge. SAFETY DEVICE 4 is designed to protect the shooter from firing the pistol in an unsafe condition.

**What you should know about all safety mechanisms:
NEVER completely trust any safety mechanism. Your pistol is equipped with an effective, well designed safety mechanism.**

NO SAFETY MECHANISM, HOWEVER, IS A SUBSTITUTE FOR PROPER GUN HANDLING. Any safety mechanism can break down or malfunction. YOU, AND YOU ALONE, ARE THE ULTIMATE SAFETY MECHANISM.

Remember, there is no such thing as a "childproof" safety or one which can completely prevent accidental discharge from careless or irresponsible use. The best safety is proper and applied training in safe gun handling.

APPROVED AMMUNITION

USING THE WRONG AMMUNITION COULD RESULT IN SERIOUS INJURY OR DEATH.
CATASTROPHIC DAMAGE COULD OCCUR.

SCANNED AND BROUGHT TO YOU BY WWW.XD-HS2000.COM
YOUR SOURCE FOR INFORMATION AND PRODUCTS XD.

Your HS 2000 pistol will function effectively and safely with a wide variety of commercial and military-standard ammunition. Here are some suggestions that will help you keep your pistol free from ammunition-related problems:

1. Use only ammunition of the caliber for which your pistol is chambered.

The correct caliber is permanently engraved on your pistol.

2. Use only clean, dry, undamaged new factory-manufactured ammunition. Always use ammunition that complies with the performance standards established by the Sporting Arms and Ammunition Manufacturers' Institute, Inc. of the United States (SAAMI).

3. Always inspect your ammunition before use to be certain all cartridges are the correct caliber. **READ ANY WARNINGS OR INSTRUCTIONS THAT COME WITH YOUR AMMUNITION.**

4. Keep your cartridges free of oil. Wipe the chamber clean of any oil or preservative before you shoot. Oil in the chamber creates dangerous stresses.

5. Should your pistol experience a failure to fire, follow this procedure: **Always hold the pistol keeping it pointed towards the target** and wait 30 seconds when pistol fails to fire. If a hangfire (slow ignition) has occurred, the round will fire within 30 seconds. If the round does not fire, remove the magazine, eject the round and examine the primer. If the firing pin indent on primer is light, off center, or non-existent, have your pistol examined by a competent gunsmith. If the firing pin indent on primer appears normal (in comparison with similar previously fired round(s) you may assume you have a faulty round of ammunition, segregate misfired round(s) from other live ammunition and empty cases, reload and continue firing.

NOTE: Dispose of misfired rounds in accordance with ammunition manufacturer's instructions.

WARNING:

"DISCHARGING FIREARMS IN POORLY VENTILATED AREAS, CLEANING FIREARMS, OR HANDLING AMMUNITION MAY RESULT IN EXPOSURE TO LEAD AND OTHER SUBSTANCES KNOWN TO CAUSE BIRTH DEFECTS, REPRODUCTIVE HARM, AND OTHER SERIOUS PHYSICAL INJURY. HAVE ADEQUATE VENTILATION AT ALL TIMES. WASH HANDS THOROUGHLY AFTER EXPOSURE."

LOADING MAGAZINES

NEVER POINT YOUR PISTOL AT ANYTHING YOU DO NOT INTEND TO SHOOT.

LOADING THE MAGAZINE

1. Press down on the magazine follower with the cartridge case rim.
2. Push the cartridge to the rear and under the magazine lips.
3. Continue until the magazine holds the desired number of cartridges.
4. Number of inserted rounds can be checked through the indicator holes on the back of the magazine.

SCANNED AND BROUGHT TO YOU BY WWW.XD-HS2000.COM
YOUR SOURCE FOR INFORMATION AND PRODUCTS XD.



LOADING THE PISTOL

NEVER SQUEEZE THE TRIGGER OR PUT YOUR FINGER IN THE TRIGGER GUARD
UNTIL YOU ARE AIMING AT THE TARGET YOU INTEND TO SHOOT

LOADING THE PISTOL

1. Point the pistol in a safe direction.
2. Insert loaded magazine (23) and check that the magazine catch (9) engages.
3. With your finger outside the trigger guard, and pointing the pistol in a safe direction, draw the slide (17) back to the rear stop and allow it to fly forward. **The pistol is now ready to fire.**
4. The loaded chamber indicator (5) will be in the up position.
5. The firing pin status (6) indicator will be in the "out" position.

SCANNED AND BROUGHT TO YOU BY WWW.XD-HS2000.COM
YOUR SOURCE FOR INFORMATION AND PRODUCTS XD.



SIGHT PICTURE/ FIRING THE PISTOL

NEVER SHOOT AT A HARD SURFACE, SUCH AS A ROCK, OR A LIQUID SURFACE, SUCH AS WATER. A BULLET MAY RICOCHET AND TRAVEL IN ANY DIRECTION TO STRIKE YOU, OR AN OBJECT YOU CANNOT SEE.

SHOOTING THE PISTOL

1. Ensure that the shooter and bystanders are wearing proper ear and eye protection.
2. Aim the pistol at a safe target.
3. Place finger on trigger (15) and pull back trigger (15) to discharge the round.
4. Keep the pistol aimed at the target and fire further rounds as desired.
5. While pointed in a safe direction, remove the magazine and unload the pistol. If the pistol has been fired until the magazine is empty, the slide (17) will be caught in the open position. If firing is to continue, reload the pistol (page 16).

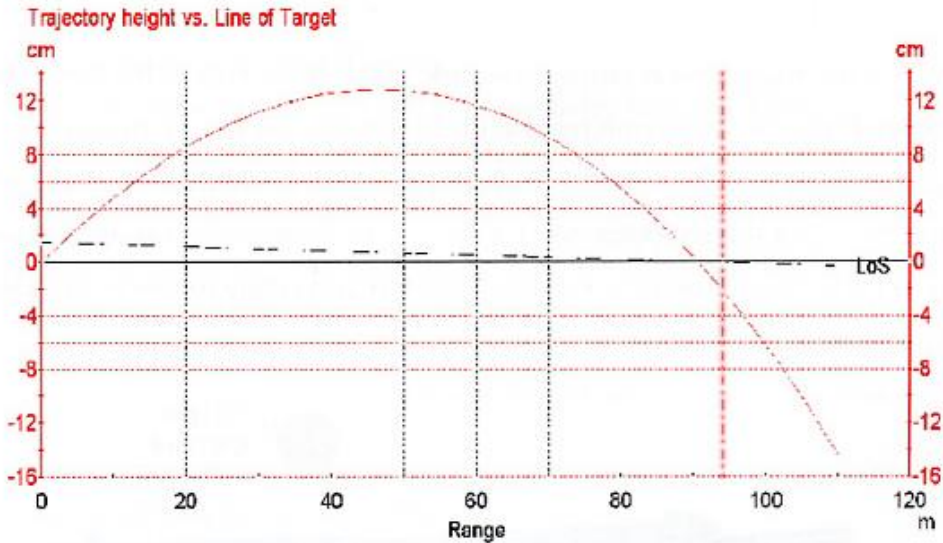
SCANNED AND BROUGHT TO YOU BY WWW.XD-HS2000.COM
YOUR SOURCE FOR INFORMATION AND PRODUCTS XD.



**PROPER
SIGHT ALIGNMENT**

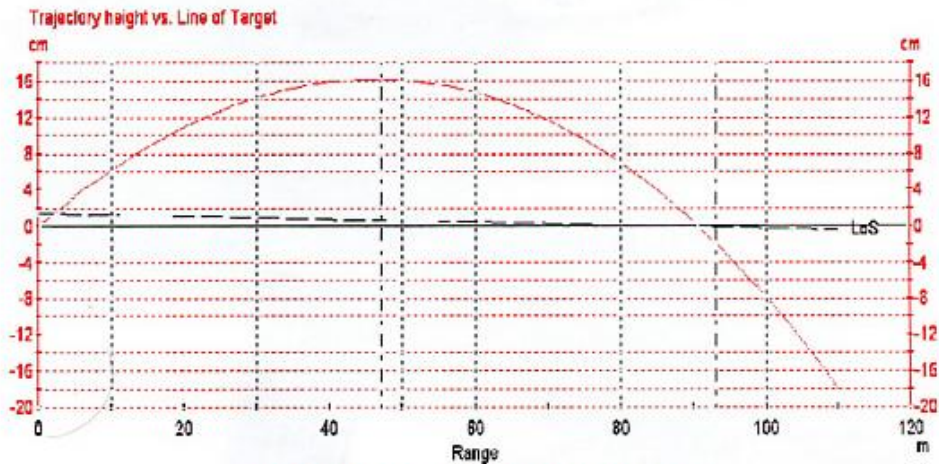
9 X 19MM BALLISTICS GRAPH

ALWAYS KNOW YOUR TARGET, AND THE MAXIMUM RANGE OF THE AMMUNITION THAT YOU ARE USING.



9 X 19MM PARABELLUM 115 GRAIN FMJ

— SCANNED AND BROUGHT TO YOU BY WWW.XD-HS2000.COM —
YOUR SOURCE FOR INFORMATION AND PRODUCTS XD.



9 X 19MM PARABELLUM 124 GRAIN FMJ

RELOADING DURING SHOOTING

NEVER USE YOUR PISTOL IF IT FAILS TO FUNCTION PROPERLY. NEVER FORCE A JAMMED ACTION, AS THE JAMMED ROUND MAY EXPLODE.

SCANNED AND BROUGHT TO YOU BY WWW.XD-HS2000.COM
YOUR SOURCE FOR INFORMATION AND PRODUCTS XD.

RELOADING DURING SHOOTING

When the magazine is empty, the slide catch lever (16) holds the slide open. Press the magazine release (9) to remove the empty magazine (23) and insert a loaded one. Push down the slide catch lever (16) with the thumb of the shooting hand, or draw back the slide (17) and allow it to fly forward. The pistol is again loaded and ready to fire in the safety locked action mode.



UNLOADING THE PISTOL

ALWAYS TRANSPORT YOUR PISTOL UNLOADED.

SCANNED AND BROUGHT TO YOU BY WWW.XD-HS2000.COM
YOUR SOURCE FOR INFORMATION AND PRODUCTS XD.

UNLOADING THE PISTOL

1. Pointing the pistol in a safe direction.
2. Keep your finger off the trigger (15) and remove the magazine (23).
3. Pull the slide (17) rearward one or more times to insure the chamber is empty. watch for a live round or empty case to be ejected. Pull side (17) rearward and lock it with the slide catch lever (16) holding the slide open.
4. Make sure the last round in the chamber has been extracted and ejected. Visually and physically check the chamber and the magazine well to make sure the pistol has been unloaded. Physically insert your index finger in the chamber and feel for the presence of a round or cartridge case in chamber. The pistol is now unloaded and safe.
5. Depress the slide catch lever (16) the slide (17) will be released forward.
6. Unload and store the magazine (23).
7. Pick up and store all loose rounds and empty cartridge cases.
8. The pistol must be cleaned after every shooting session.

VISUAL AND
PHYSICALLY
INSPECT CHAMBER

WARNING:
NEVER PLACE YOUR
HAND OVER THE
EJECTION PORT
WHEN UNLOADING



FIELD STRIPPING

BEFORE PERFORMING ANY CLEANING OR MAINTENANCE, MAKE SURE THE PISTOL IS COMPLETELY UNLOADED (THIS INCLUDES THE MAGAZINE AND CHAMBER).

Follow these instructions and your HS 2000 pistol will remain in excellent condition even after years of hard service.

FIELD STRIPPING THE PISTOL

1. Unload the pistol (*page 17*).
2. Draw back the slide (**17**) to the rear stop position and lock it open , thumbing up the slide catch lever (**16**).
3. Visually inspect the chamber to confirm the pistol is unloaded (*page 17*).
4. Rotate the slide take down lever (**22**)to a vertical 12 o'clock position.

**SCANNED AND BROUGHT TO YOU BY WWW.XD-HS2000.COM
YOUR SOURCE FOR INFORMATION AND PRODUCTS XD.**



FIELD STRIPPING

BEFORE PERFORMING ANY DISASSEMBLY, MAKE SURE YOU ARE WEARING EYE PROTECTION.

5. Pull the slide (17) slightly to release the slide catch lever (16). Then allow the slide to slowly move forward until the spring tension is released. Pull the trigger to fully unlock the side from the frame.



SCANNED AND BROUGHT TO YOU BY WWW.XD-HS2000.COM
YOUR SOURCE FOR INFORMATION AND PRODUCTS XD.

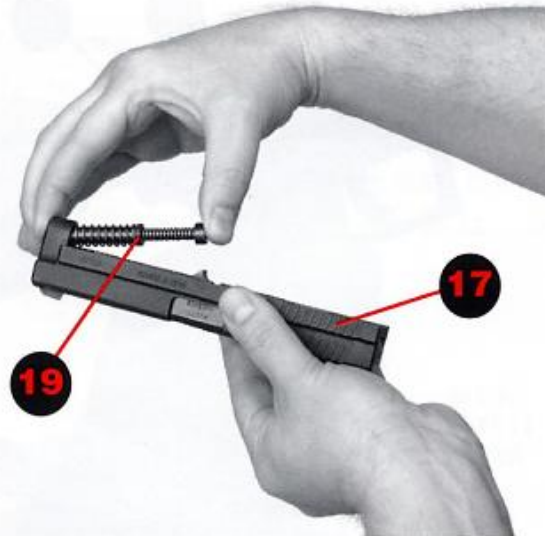
6. Now slip the complete assembly {slide (17), barrel (18) and dual tension recoil spring (19)} forward and off the frame (20).



FIELD STRIPPING

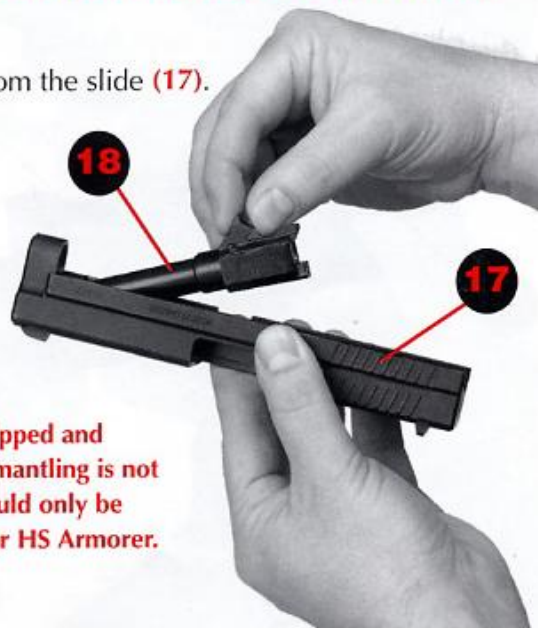
ALWAYS BE SURE YOUR BACKSTOP IS ADEQUATE TO STOP AND CONTAIN BULLETS BEFORE BEGINNING TARGET PRACTICE SO THAT YOU DO NOT HIT ANYTHING OUTSIDE THE RANGE SHOOTING AREA.

7. Remove the dual tension recoil spring (19), from the slide (17). Take care to control the release of the spring tension.



SCANNED AND BROUGHT TO YOU BY WWW.XD-HS2000.COM
YOUR SOURCE FOR INFORMATION AND PRODUCTS XD.

8. Remove the barrel (18) from the slide (17).



The pistol is now fully field stripped and ready for cleaning. Further dismantling is not necessary for cleaning and should only be done by a qualified gunsmith or HS Armorer.

MAGAZINE DISASSEMBLY

ALWAYS BE ABSOLUTELY SURE OF YOUR TARGET AND THE AREA BEHIND IT BEFORE YOU SQUEEZE THE TRIGGER. A BULLET COULD TRAVEL THROUGH OR PAST YOUR TARGET UP TO 1 1/2 MILES. IF IN DOUBT, DO NOT SHOOT.



Magazines do not normally need to be disassembled for cleaning each time your HS pistol is cleaned. Disassembling and cleaning magazines at less frequent intervals (perhaps every 3-4 months) is normally sufficient, unless the magazines have been exposed to dirt or other adverse conditions or inspection indicates the need for cleaning.

When it is necessary to disassemble magazines for cleaning, proceed as follows:

**SCANNED AND BROUGHT TO YOU BY WWW.XD-HS2000.COM
YOUR SOURCE FOR INFORMATION AND PRODUCTS XD.**

UNLOADED MAGAZINE INSPECTION

1. Inspect condition of magazine body for signs of damage or dirt (feed lips and floor plate).
2. Inspect free movement and spring action of follower.
3. Inspect that the magazine floor plate is properly locked.
4. Inspect for smooth insertion of magazine into pistol and proper engagement of floor plate magazine lock/release.

SAFETY CAUTION:

The magazine spring, follower, and inner floor plate are under spring tension, and can cause eye or other injury if not controlled during removal. Wear protective safety glasses to reduce the risk of eye injuries. Be sure to maintain downward pressure on the magazine spring, with your thumb, while disassembling.

Disassembly of the HS magazines is accomplished by depressing the magazine locking plate and sliding the floor plate forward



CLEANING THE FIELD STRIPPED PISTOL

ALWAYS MAKE SURE YOUR PISTOL IS UNLOADED BEFORE CLEANING. STORING, TRAVELING, OR HANDING IT TO ANOTHER PERSON, AND MAKE SURE THE SLIDE IS LOCKED OPEN WITH THE MAGAZINE REMOVED.

SCANNED AND BROUGHT TO YOU BY WWW.XD-HS2000.COM
YOUR SOURCE FOR INFORMATION AND PRODUCTS XD.

BARREL AND CHAMBER

Clean the barrel and the chamber from the rear with a quality cleaning solvent, using a cleaning rod and brush of the correct caliber. Never clean the barrel from the muzzle end. Wipe the interior and exterior of the barrel free of all residue. Lightly lubricate the barrel, inside and out, with a quality lubricant designed for firearms.

BREECH FACE AND LOCKING INSERT

Use a small nylon bristle brush to thoroughly clean the breech face and locking insert.

EXTERNAL METAL SURFACES

After each use, wipe all metal surfaces with a cloth lightly dampened with a lubricant preservative. This will remove any foreign material and preserve the finish of the pistol. Before reassembling the pistol, lightly lubricate, with one drop of oil, the dual tension recoil spring (19) and frame rails (21) .

FRAME

The frame should be checked for cleanliness. Exposed parts in the frame may be wiped with a clean, soft cloth that has been slightly dampened with a quality firearm cleaning solvent. All solvent should then be wiped from the parts so that they are clean and dry.

NOTE: *Some cleaning solvents may be harmful to the finish of your pistol. Read the solvent manufacturer's product use instructions and warning labels before using.*

Do not over lubricate your HS pistol. Large quantities of oil or grease will collect unburnt powder and dirt which will accelerate wear.

IMPORTANT:

IT IS YOUR RESPONSIBILITY TO MAINTAIN YOUR PISTOL,
IF RUST APPEARS IN THE BORE, THE BARREL SHOULD BE REPLACED.
PRIOR TO SHOOTING MAKE SURE THE BORE IS DRY.

INSPECTION

ALWAYS WEAR PROTECTIVE SHOOTING GLASSES FOR EYE PROTECTION.
DO NOT FIRE THE PISTOL NEAR YOUR EYES AS THE SLIDE
WILL SHARPLY MOVE BACK UPON FIRING.

SCANNED AND BROUGHT TO YOU BY WWW.XD-HS2000.COM
YOUR SOURCE FOR INFORMATION AND PRODUCTS XD.

INSPECTION OF YOUR PISTOL

Performed at regular intervals, a limited (user-level) inspection of your HS 2000 pistol can help to confirm that it is functioning properly.

Failure of any of the following checks, which cannot be remedied by cleaning, should be referred to HS America, LLC, your local HS dealer, or a HS-certified Armorer. To inspect your HS 2000 pistol, follow these steps:

SAFETY CAUTION:

ALL OF THE FOLLOWING CHECKS AND INSPECTIONS ARE PERFORMED WITH AN UNLOADED PISTOL:

- 1. UNLOAD.** Be certain that your HS 2000 pistol is UNLOADED by following the steps of the unloading procedure (*on page 17*).
- 2. EXTERNAL INSPECTION.** Inspect the outside of your pistol for dirt, corrosion, or any visible damage. Pay special attention to the sights, trigger, trigger safety, grip safety, slide stop lever, magazine catch, and loaded chamber indicator.
- 3. FIELD STRIP AND BARREL INSPECTION.** Field strip the pistol, removing and inspecting the barrel for dirt, leading, bulges, cracks, or obstructions.

SAFETY CAUTION:

A cracked, bulged, or obstructed barrel should not be used, but should be referred to HS America, LLC or HS-certified Armorer for repair or replacement.

WARNING DO NOT ATTEMPT TO DISASSEMBLE YOUR
PISTOL BEYOND THE POINT EXPLAINED IN THIS MANUAL
THIS SHOULD BE DONE ONLY BY A QUALIFIED GUNSMITH
OR A CERTIFIED HS ARMORER.

INSPECTIONS

ALWAYS CARRY YOUR PISTOL EMPTY AND OPEN WHILE ON THE RANGE UNTIL PREPARING TO FIRE. KEEP IT POINTING TOWARD THE BACKSTOP DURING LOADING, FIRING AND UNLOADING OF THE PISTOL.

**SCANNED AND BROUGHT TO YOU BY WWW.XD-HS2000.COM
YOUR SOURCE FOR INFORMATION AND PRODUCTS XD.**

(continued from page 23):

- 4. FIRING PIN SAFETY CHECK.** Grasp the slide (with barrel and recoil spring assembly removed). Pull rearward on the lug of the firing pin, pulling the firing pin all the way to the rear of the slide, check that the firing pin status indicator (6) protrudes from the back of the slide, and then ease the firing pin forward until it stops in contact with the firing pin safety. (Note: **DO NOT** allow the firing pin to snap forward against the firing pin safety, as damage to the firing pin or firing pin safety could result.) Then press the firing pin forward with your forefinger using moderate force (approximately 5-8 pounds). The firing pin should not slip forward past the firing pin safety, and should not protrude from the breech face of the slide.
- 5. FIRING PIN.** Depress in on the firing pin/drop safety with your fingertips. Then push the firing pin forward with your forefinger using moderate force (approximately 5-8 pounds). The tip of the firing pin should protrude from the breech face. Examine the tip of the firing pin for damage.
- 6. LOADED CHAMBER INDICATOR.** Look across the breech face to inspect the loaded chamber indicator. Check for cleanliness, spring tension and damage. The loaded chamber indicator should move up easily with slight pressure from your finger.
- 7. EXTRACTOR.** Look across the breech face to inspect the extractor for cleanliness and to be sure the extractor claw is not broken.
- 8. EJECTOR.** The ejector in the rear of the pistol should appear intact (not broken).
- 9. SLIDE STOP LEVER TEST.** Pull upward on the slide stop lever and release. The lever should snap down sharply into the frame. If the lever is sluggish or remains in the upward position, refer the pistol to HS America, LLC or a HS-certified Armorer.
- 10. REASSEMBLY AND TRIGGER SAFETY CHECK.** Reassemble the pistol. **BE SURE THAT THE PISTOL IS UNLOADED**, and cycle the slide to reset the safety locked action. Depress the grip safety. With the pistol pointed in a safe direction, grasp the sides of the trigger (without touching or depressing the trigger safety) and attempt to pull the trigger to the rear. The trigger safety should prevent rearward movement of the trigger, and the pistol should not dry fire.

INSPECTIONS / REASSEMBLY

ALWAYS WEAR EAR PROTECTION WHEN SHOOTING, ESPECIALLY ON A RANGE. WITHOUT EAR PROTECTION THE NOISE FROM YOUR PISTOL AND OTHER GUNS CLOSE TO YOU COULD LEAVE A "RINGING" IN YOUR EARS FOR SOME TIME AFTER FIRING AND COULD LEAD TO A CUMULATIVE AND LONG TERM PERMANENT HEARING LOSS.

SCANNED AND BROUGHT TO YOU BY WWW.XD-HS2000.COM
YOUR SOURCE FOR INFORMATION AND PRODUCTS XD.

SAFETY CAUTION: *If the trigger safety fails to keep the trigger from moving rearward, and the pistol dry fires, DO NOT LOAD OR FIRE YOUR HS 2000 PISTOL. Instead, have the pistol inspected and repaired by HS America, LLC or a HS-certified Armorer.*

11. GRIP SAFETY CHECK. Be sure that the pistol is unloaded, and cycle the slide to reset the safety locked action. With the pistol pointed in a safe direction, grasp the pistol with out depressing the grip safety. Pull the trigger and trigger safety to the rear. The pistol should not dry fire.

SAFETY CAUTION: *If the grip safety fails to keep the pistol from dry firing, do not load or fire your HS 2000 pistol. Instead, have the pistol inspected and repaired by HS America, LLC or a HS-Certified Armorer.*

12. TRIGGER RESET TEST. Being sure that the pistol is **UNLOADED** and pointed in a safe directions, pull the trigger and hold the trigger to the rear. You should hear and feel the firing pin fall. Pull the slide to the rear and release it, allowing it to snap forward. Now release the trigger. The trigger should reset to its forward position. Repeat several times.

13. MAGAZINE INSPECTION. Inspect all magazines for dirt or visible damage, taking special care to look for spread or damaged feed lips or broken magazine followers. Press down on the follower with your fingertips and release. The follower should spring fully upward, and should not stick inside the magazine tube.

14. SLIDE LOCK-OPEN TEST. Insert an **EMPTY** magazine into your pistol. Pull the slide fully to the rear. The slide should lock open. Repeat using each of your **EMPTY** magazines.

INSPECTION BY CERTIFIED HS ARMORER

HS pistols carried by law enforcement, security, or military personnel, and other HS pistols subjected to heavy usage, should be inspected periodically by a HS-certified Armorer, or by returning the pistols to HS America, LLC. for inspection. Although the appropriate inspection intervals will depend on the conditions of use, a reasonable rule of thumb for law enforcement, security, and military users is that the pistols should be inspected by a HS-certified Armorer at annual intervals.

To locate a HS-certified Armorer in your area, contact your local HS dealer or HS America, LLC.

REASSEMBLY

Reassembling the HS pistol is carried out by reversing the disassembly procedure.

TRANSPORTATION AND STORAGE

NEVER TAKE ANYONE'S WORD THAT A GUN IS UNLOADED: CHECK FOR YOURSELF, WITH FINGERS OFF THE TRIGGER, AND GUN POINTED IN A SAFE DIRECTION.

SCANNED AND BROUGHT TO YOU BY WWW.XD-HS2000.COM
YOUR SOURCE FOR INFORMATION AND PRODUCTS XD.

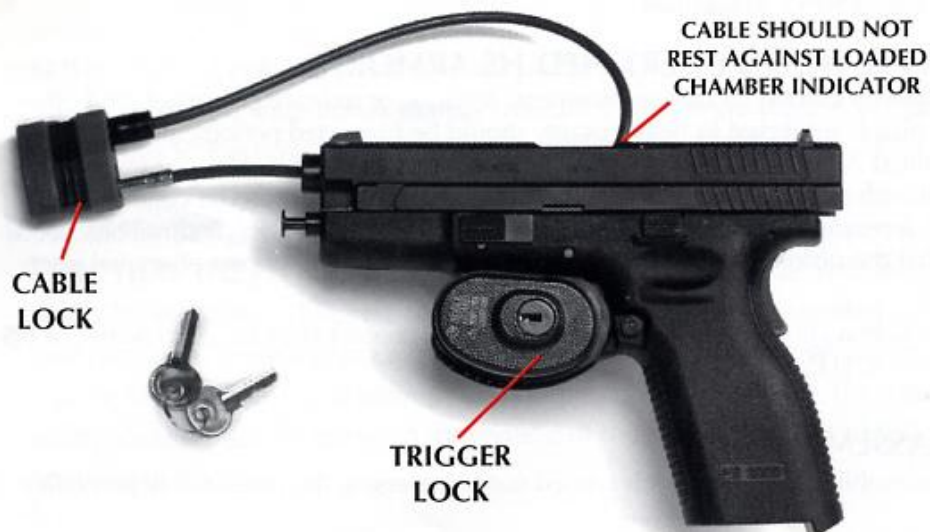
TRANSPORTATION AND STORAGE

When transporting your pistol, keep it unloaded for your safety and for the safety of others. Know and comply with all laws governing the transportation of firearms in your locality. When storing your pistol, keep it separated from ammunition, under lock and key and out of the reach of children and other inexperienced or unauthorized persons. Never place or store any firearm in such a manner that it may be dislodged or dropped. Firearms should always be stored securely and unloaded, away from children and unauthorized persons.

STORE SECURELY & UNLOADED

Before firing, remove all oil and grease from the bore. Do not keep the pistol stored in a leather holster or case. leather attracts moisture, even though the holster or case may appear to be perfectly dry.

PROPER PLACEMENT OF COMMON TYPES OF GUN LOCKS



TROUBLESHOOTING

IF A BULLET IS LODGED IN THE BORE, DO NOT ATTEMPT TO SHOOT IT OUT BY USING ANOTHER CARTRIDGE, OR BY BLOWING IT OUT WITH A BLANK OR A CARTRIDGE FROM WHICH THE BULLET HAS BEEN REMOVED. THIS CAN GENERATE EXCESSIVE PRESSURE, DAMAGE THE FIREARM AND CAUSE SERIOUS PERSONAL INJURY.

TROUBLESHOOTING GUIDE

SCANNED AND BROUGHT TO YOU BY WWW.XD-HS2000.COM
YOUR SOURCE FOR INFORMATION AND PRODUCTS XD.

Malfunction	Cause	Correction
Failure to feed: No round fed into the chamber	Magazine not properly inserted or magazine is deformed or dirty	Insert magazine properly or change magazine
Slide does not close easily or completely	Pistol or cartridge is fouled (dirty) or pistol is too heavily lubricated	Clean and lubricate pistol and/or replace the ammunition
	Pistol requires service	Return to HS America, LLC
Extraction/Ejection: After firing, the case stays in the chamber or is jammed in the ejection port	Insufficient recoil due to dirt	Clean and lubricate the pistol
	Light hold or limp wrist	Solid firm grip
	Low powered ammunition	Change ammunition
	Pistol requires service	Return to HS America, LLC
Ignition: Firing pin drops but round does not fire	Firing pin obstructed Check ammunition	Inspect, clean and lubricate the pistol
	Faulty ammunition	Manually cycle in next round
	Pistol requires service	Return to HS America, LLC

Firearms work reliably if properly maintained. If there is a malfunction during firing, here's what to do:

1. Keep the pistol pointed in a safe direction with your finger off the trigger.
2. Remove and secure the magazine.
3. Move the slide rearward and forward to clear any cartridge that may be in the chamber.
4. If you suspect that a bullet is lodged in the bore, field strip (*page 18*) your pistol and check to see if the barrel is blocked. If there is a bullet lodged in the bore, return the pistol to HS America. See instructions on page 30.

Follow the above procedures if:

- You notice that a cartridge is difficult to chamber, or
- A cartridge does not fire, or
- The mechanism fails to extract a fired cartridge case, or
- You discover unburned grains of propellant powder spilled in the mechanism, or
- A shot sounds or feels weak or abnormal.

SIGHTS

NEVER DRINK ALCOHOLIC BEVERAGES OR TAKE DRUGS BEFORE OR DURING SHOOTING YOUR VISION ON JUDGEMENT COULD BE SERIOUSLY IMPAIRED MAKING YOUR GUN HANDLING UNSAFE

SIGHT ADJUSTMENTS

SCANNED AND BROUGHT TO YOU BY WWW.XD-HS2000.COM
YOUR SOURCE FOR INFORMATION AND PRODUCTS XD.

The HS 2000 Pistols are equipped with a rear sight which is adjustable for windage only. The rear sight can be drifted laterally in its dovetail on the top of the slide by tapping it with a wooden or nylon drift or similar implement. Move the rear sight in the direction you want the shot to move on the target. The front sight is fixed. Both front and rear sights are provided with white-dot inserts for rapid target acquisition and easy alignment of the sights to obtain a correct sight picture.

SIGHTS

The HS 2000 pistol is equipped with drift adjustable fixed sights which have proven their worth under severe conditions. The sights consist of a rear sight and a front sight blade, designed and dimensioned to ensure rapid target acquisition and correct sight picture even when visibility is poor. You can adjust the sights as follows:

Windage: Change windage by moving the rear sight either to the left or right in its dovetail. When you do this, follow the rear sight rule: Move the rear sight in the direction you want the group to go. Moving the rear sight 0.020" in the dovetail changes the point of impact by approximately 3" at 25 yards. (*Note: HS America has available a Combination Sight Pusher tool which makes it easier to adjust and change sights.*)

Elevation: There are different heights available for the rear sight. The sights are numbered according to their height. You can change elevation by changing the rear sight. Each rear sight change will move the impact of the bullet approximately 2" at 25 yards.

Remember, a higher rear sight will raise the impact of the bullet; a lower rear sight will lower the impact of the bullet.

SIGHT OPTIONS

FRONT SIGHT		REAR SIGHT	
Number	Height	Number	Height
no mark	5.60mm	D	5.80 mm
		no mark	6.30 mm
		G	6.80 mm

WARRANTY STATEMENT

NEVER WALK, CLIMB, FOLLOW A COMPANION OR HUNT WITH YOUR PISTOL
READY TO FIRE (IN BATTERY), OUT OF ITS HOLSTER.

HS America, LLC
Warranty Registration
5005 Chapman Hwy
Knoxville TN 37920

SCANNED AND BROUGHT TO YOU BY WWW.XD-HS2000.COM
YOUR SOURCE FOR INFORMATION AND PRODUCTS XD.

From HS America, LLC To You

All HS America, LLC firearms are only warranted to the original retail purchaser only for the lifetime of the said original retail purchaser. In the event that this original retail purchaser, at the time of the original purchase, shall donate this firearm to another person, the donee must be listed on the warranty card, and the warranty card must be returned at that time to HS America, LLC. Upon receipt of the warranty card indicating the name of the said donee, this warranty shall be extended to the lifetime of the said donee. This warranty applies only if the firearm was purchased from an Authorized HS Dealer in the United States, and if it was imported into the United States and distributed by HS America, LLC to an Authorized HS Dealer and/or through HS America, LLC Authorized Distributor. This lifetime warranty explicitly excludes sales to government institutions or law enforcement agencies.

What Will We Do

HS America, LLC will, at its option, repair or replace without charge any HS America, LLC firearm that fails due to a defect in materials or workmanship. Parts and labor are included. Repairs are warranted for the duration of the warranty. If HS America, LLC replaces a firearm under this warranty, you will receive a new warranty. HS America, LLC will return your firearm or its replacement to you, normal surface freight prepaid.

How to Obtain Service

You must send your firearm freight prepaid to HS America, LLC at the address listed above (only FFL dealers may ship firearms through the U.S Mail). No C.O.D. shipments will be accepted. Only the existing HS Service Center at our Tennessee facility, and any other authorized HS America, LLC Service Center that may be established by HS America, LLC, shall be authorized to make warranty repairs. Return the complete, unloaded firearm and any magazines with a detailed description of the problem. (DO NOT send any live ammunition with the firearm. If you must send ammunition to us for proof purposes, be sure that it is sent separately from the firearm.) You must provide HS America, LLC with satisfactory proof of date of original purchase. We strongly recommend that you return a properly completed warranty registration card to establish eligibility for warranty service.

(continued on page 30)

WARRANTY STATEMENT

NEVER PLACE FINGERS IN EJECTION PORT, THEY COULD BE INJURED
BY THE SLIDE MOVING FORWARD UNINTENTIONALLY.

SCANNED AND BROUGHT TO YOU BY WWW.XD-HS2000.COM
YOUR SOURCE FOR INFORMATION AND PRODUCTS XD.

How to Obtain Service *(continued from page 29)*

If you do not return a warranty card to HS, you are required at the time you send your firearm to HS America, LLC warranty service to provide proof of the date that you purchased your new HS America, LLC firearm. As stated earlier, in the event that this firearm was given as a gift at the time of original purchase, the warranty card with the name of the donee must be sent back to HS America, LLC, in order for the warranty to become effective.

What Is Not Covered

This warranty does not cover defects or damage caused by: (1) unreasonable use; (2) failure to provide proper care or maintenance; (3) failure to comply with instructions in the owner's manual, including improper installation of original HS parts by the owner or his agent; (4) normal wear and tear for the degree of use; (5) rust or corrosion; (6) obstructions in the barrels; or (7) abusive use. HS America, LLC reserves the right to determine what constitutes the unreasonable or abusive use of the firearm. All aftermarket parts and all accessories are excluded from warranty coverage. This warranty does not cover any claims made by the second or subsequent owner of an HS America, LLC firearm as stated above.

Any unauthorized alteration or modification of the firearm or use of parts or components not originally made by HS America, LLC shall void this warranty. HS America, LLC shall not be responsible for any claims involving this firearm that result from the use of faulty, non-standard, remanufactured, or reloaded ammunition or ammunition not manufactured to NATO and/or SAAMI specifications. Under no circumstances shall HS America, LLC be responsible or liable for incidental or consequential damages with respect to loss of use, loss of business or profits, other economic loss or injury to property, whether as a result of breach of express or implied warranty, negligence or otherwise. This Lifetime Warranty applies only to retail purchases by individuals. HS America, LLC firearms purchased by law enforcement, military, and security organizations for duty issue to their personnel are covered by a limited two-year warranty.

Some states do not allow the exclusion or limitation of incidental or consequential damages, so the above limitation or exclusion may not apply to you. This warranty gives you specific legal rights, and you may also have other rights, which vary from state to state. This limited warranty is the only express warranty by HS America, LLC. HS America, LLC authorizes no dealer or any other person to vary the terms of this warranty or make any other express warranties.

Where to Get Further Help? If you have questions concerning this warranty, please contact HS's Customer Service Department at the following address: HS America, LLC, Customer Service, 5005 Chapman Hwy, Knoxville TN 37920 USA. Telephone: 865-573-0065

SPECIFICATIONS

WHEN READY FOR FIRING BE SURE THAT THE AREA BEHIND THE SLIDE IS FREE (WATCH YOUR THUMB) AS SLIDE WILL SHARPLY MOVE BACK UPON FIRING.

SPECIFICATIONS ON THE HS 2000 PISTOL

**SCANNED AND BROUGHT TO YOU BY WWW.XD-HS2000.COM
YOUR SOURCE FOR INFORMATION AND PRODUCTS XD.**

Mechanically-Locked, Recoil-Operated, Semiautomatic Pistol, Safety Locked Action with 4 Safeties:

1. Firing-pin block/drop safety
2. Grip Safety
3. Trigger Safety
4. Out of Battery Safety

Caliber	9 X 19 mm Para, 357 sig, 40 cal
Operation	Short recoil, locked breach mechanism, self loading, safety locked action
Frame	Improved polymer with oversized heat treated steel slide rails
Magazine capacity	15 rounds LE / 10 rounds civilian
Weight (empty)	22.88 oz / 650 g
Weight (full 15 rnd mag)	32.03 oz / 910 g
Length (overall)	7.2 in / 180 mm
Sights	(Front) blade, dovetail, dot (Rear) square notch, dovetail, two dot Drift adjustable and replaceable
Special Features	Trigger safety, Grip safety, Loaded chamber indicator, Firing pin status indicator, Fires under water up to 3.0 m, Firing pin block (drop) safety, Ambidextrous magazine release, Limited lifetime warranty
Number of safeties	Four (4)

OPTIONAL ACCESSORIES

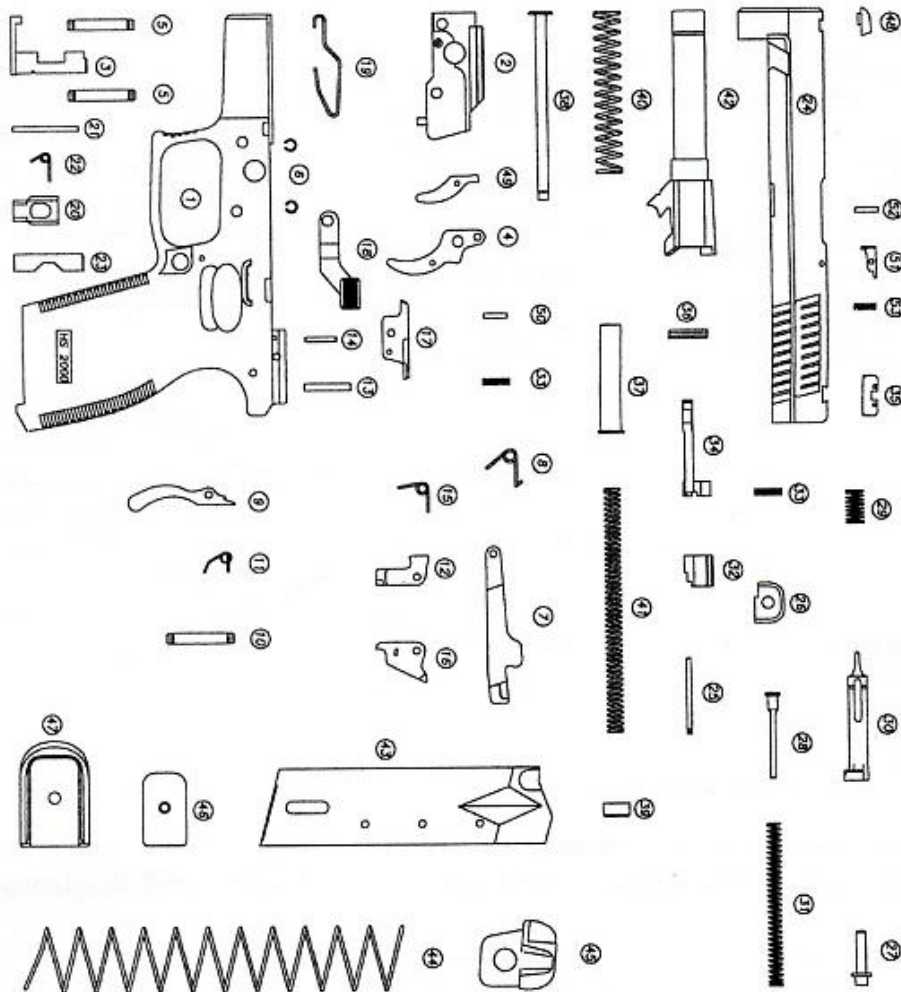
Sight pusher, extra magazines, cleaning kit, adjustable sights, scope mounts, night sights, 3-Dot sights, carrying case, holster, flashlight and attachment.

See HS America, LLC's web site at www.hsarms.com for the latest in accessories. Also contact your local HS Dealer to obtain HS approved accessories.

PARTS DIAGRAM

FOR STORAGE: UNLOAD THE FIREARM AS DESCRIBED ON PAGE 17. THEN AFTER VERIFYING THAT THE FIREARM IS EMPTY (CHAMBER EMPTY AND MAGAZINE REMOVED), POINT THE PISTOL IN A SAFE DIRECTIONS AND PULL THE TRIGGER. STORE THE FIREARM IN THE PROVIDED CONTAINER IN THIS CONDITION ONLY.

SCANNED AND BROUGHT TO YOU BY WWW.XD-HS2000.COM
YOUR SOURCE FOR INFORMATION AND PRODUCTS XD.



PARTS DIAGRAMS

**ALWAYS BE SURE BARREL AND ACTION ARE CLEAR OF OBSTRUCTIONS.
CLEAR OBSTRUCTIONS IMMEDIATELY SO THAT THE PISTOL WILL
FUNCTION CORRECTLY AND SAFELY.**

**SCANNED AND BROUGHT TO YOU BY WWW.XD-HS2000.COM
YOUR SOURCE FOR INFORMATION AND PRODUCTS XD.**

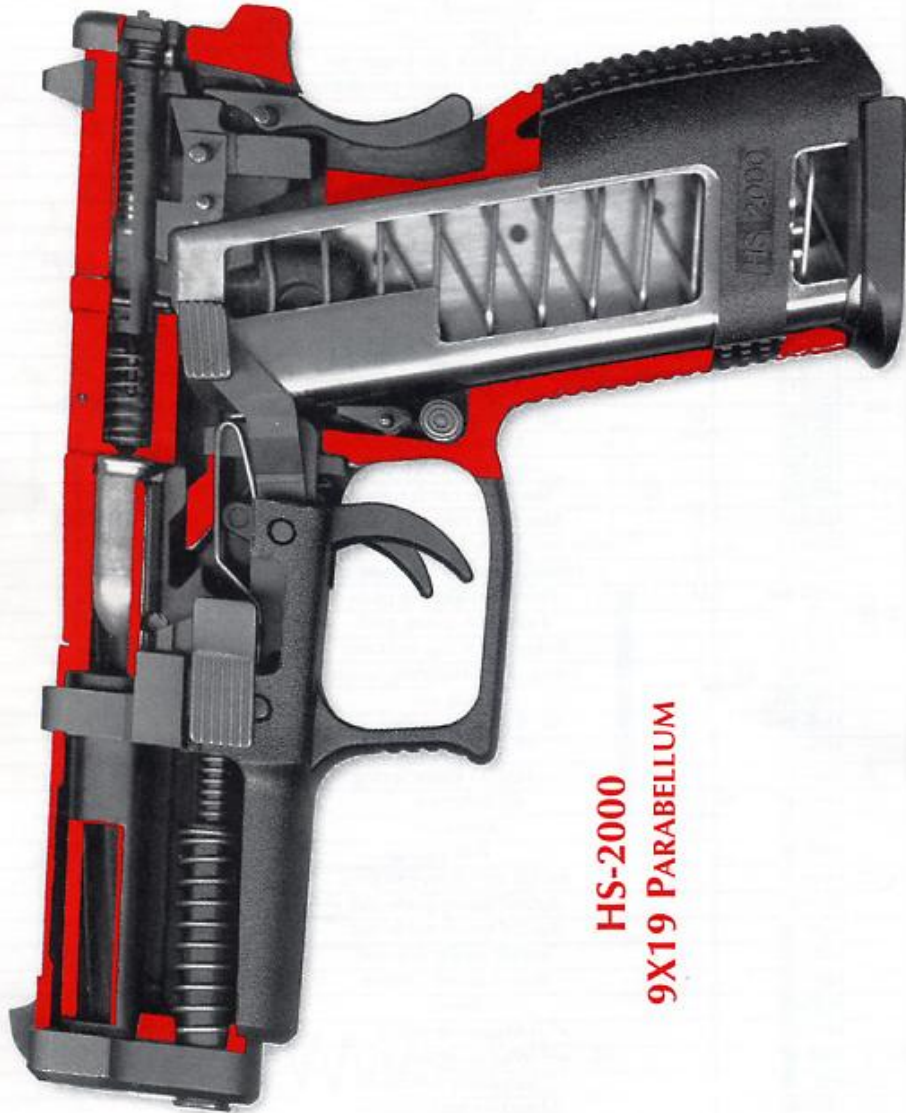
PISTOL "HS 2000" - US MODEL

Part #	Part Name	Quantity
HS9-1	Receiver - 3	1
HS9-2	Locking block - 2	1
HS9-3	Disassembly lever	1
HS9-4	Trigger w/safety	1
HS9-5	Locking block pin trigger pin	2
HS9-6	Locking block trigger pin detent	2
HS9-7	Trigger bar	1
HS9-8	Trigger bar spring	1
HS9-9	Grip safety	1
HS9-10	Grip safety pin	1
HS9-11	Grip safety spring	1
HS9-12	Sear	1
HS9-13	Sear pin	1
HS9-14	Small sear pin	1
HS9-15	Sear spring	1
HS9-16	Firing pin safety lever	1
HS9-17	Ejector	1
HS9-18	Slide stop lever	1
HS9-19	Slide stop lever spring	1
HS9-20	Magazine catch	1
HS9-21	Magazine catch pin	1
HS9-22	Magazine catch spring	1
HS9-23	Magazine release button	1
HS9-24	Slide with loaded chamber indicator	1
HS9-25	Firing pin safety retaining pin	1
HS9-26	Firing pin locking plate	1
HS9-27	Firing pin spring guid	1
HS9-28	Firing pin status indicator	1
HS9-29	Firing pin dampening spring	1
HS9-30	Firing pin	1
HS9-31	Firing pin spring	1
HS9-32	Firing pin safety	1
HS9-33	Firing pin safety spring	1
HS9-34	Extractor	1
HS9-35	Rear sight	1
HS9-36	Roll pin	1
HS9-37	Recoil spring reverse plug	1
HS9-38	Recoil spring guide rod	1
HS9-39	Recoil spring guide nut	1
HS9-40	Recoil spring external	1
HS9-41	Recoil spring internal	1
HS9-42	Barrel	1
HS9-43	Magazine body	1
HS9-44	Magazine spring	1
HS9-45	Magazine follower	1
HS9-46	Magazine locking plate	1
HS9-47	Magazine floor plate	1
HS9-48	Front site	1
HS9-49	Trigger safety	1
HS9-50	Trigger safety pin	1
HS9-51	Loaded chamber indicator	1
HS9-52	Indicator small pin	1
HS9-53	Indicator spring	1

CUT AWAY

NEVER LEAVE A PISTOL UNATTENDED.
SOMEONE, ESPECIALLY A CHILD, MAY FIRE IT BELIEVING IT TO BE A TOY.

SCANNED AND BROUGHT TO YOU BY WWW.XD-HS2000.COM
YOUR SOURCE FOR INFORMATION AND PRODUCTS XD.



**HS-2000
9X19 PARABELLUM**

ADDITIONAL WARNINGS

NEVER FIRE YOUR PISTOL NEAR AN ANIMAL UNLESS IT IS TRAINED TO ACCEPT THE NOISE: AN ANIMAL'S STARTLED REACTION COULD INJURE IT OR CAUSE AN ACCIDENT.

**SCANNED AND BROUGHT TO YOU BY WWW.XD-HS2000.COM
YOUR SOURCE FOR INFORMATION AND PRODUCTS XD.**

ALWAYS KEEP YOURSELF AND OTHERS CLEAR OF THE EJECTION PORT, AS SPENT CARTRIDGES ARE EJECTED WITH ENOUGH FORCE TO CAUSE INJURY. NEVER PLACE FINGERS IN THE EJECTION PORT OF A HOT SLIDE OR BARREL DURING OR AFTER FIRING, AS THEY COULD BE BURNED BY HOT METAL.

ONLY USE HIGH QUALITY COMMERCIAL-LY MANUFACTURED AMMUNITION, IN EXCELLENT CONDITION AND IN THE CALIBER OF YOUR PISTOL.

CALIBER:

9 X 19 mm

357 sig

.45ACP

.40 cal.

THE USE OF RELOADED AMMUNITION WILL VOID THE HS WARRANTY, DUE TO THE UNPREDICTABILITY OF THE STANDARDS (SAAMI/NATO) ADHERED TO, SINCE RELOADS OF POOR QUALITY AMMUNITION MAY NOT MEET (SAAMI/NATO) SPECIFICATIONS, MAY EXCEED LIMITS, AND THEREFORE MAY BE UNSAFE.

DO NOT SHOOT THE PISTOL NEAR YOUR FACE AS THE SLIDE WILL SHARPLY MOVE BACK UPON FIRING.

CAUTION: DO NOT CARRY THE PISTOL IN THE READY TO FIRE CONDITION. THIS IS NOT THE RECOMMENDED SAFE- CARRYING METHOD FOR CIVILIAN USE.

CAUTION: TO MINIMIZE RISK OF UNINTENTIONAL DISCHARGE (AND DAMAGE) LOAD LIVE AMMUNITION INTO PISTOL ONLY WHEN YOU ARE READY TO SHOOT-
WARNING: IF THE HS PISTOL OR ANY OTHER FIREARM IS CARELESSLY OR IMPROPERLY HANDLED, THE USER COULD CAUSE AN UNINTENTIONAL DISCHARGE WHICH COULD RESULT IN DEATH, SERIOUS INJURY AND/OR PROPERTY DAMAGE.

This HS AMERICA, LLC product is classified by the ALCOHOL, TOBACCO and FIREARMS Division, of the U. S. TREASURY DEPARTMENT, AS A FIREARM OR DANGEROUS WEAPON. IT IS, THEREFORE, POTENTIALLY LETHAL!

SAFETY INSTRUCTIONS

We want you to enjoy shooting your new HS pistol, but we want you to do so safely. You may be an experienced, safe shooter already familiar with the procedures in this instruction manual, or you may have never handled a gun before. (Novice shooters should complete a NRA Certified or similar safety course.) Either way, we urge you to READ THIS ENTIRE INSTRUCTION MANUAL CAREFULLY. It is essential to follow the safety Instructions for your safety and the safety of others. WARNING: HS PISTOLS HAVE SEVERAL INTERNAL DESIGN FEATURES AND MECHANICAL SAFETIES, DESIGNED TO PREVENT AN ACCIDENTAL DISCHARGE SHOULD THE PISTOL BE DROPPED OR RECEIVE A SEVERE BLOW TO THE MUZZLE, FRONT, OR BACK OF THE PISTOL. THEREFORE, EXTRA CARE AND STRICT ADHERENCE TO THE SAFETY INSTRUCTIONS AND OTHER INSTRUCTIONS CONTAINED IN THIS MANUAL BY THE GUN USER IS MANDATORY FOR MINIMIZING THE RISK OF ACCIDENTS. HOWEVER, LIKE ANY OTHER MECHANICAL DEVICE, WHEN SUBJECTED TO EXTREME FORCES NOT NORMALLY ENCOUNTERED IN SPORTING, LAW ENFORCEMENT, OR MILITARY USE, FAILURE COULD OCCUR. THE PROPER AND SAFE FUNCTION OF THIS PISTOL IS BASED ON THE PREMISE THAT PARTS ARE NOT ALTERED OR MODIFIED, AND THAT THE PISTOL IS USED FOR ITS INTENDED PURPOSE.

SAFETY NOTES

Safety Notes on the use of the HS 2000. Clear the pistol before handling the firearm. To clear it, do so by:

**SCANNED AND BROUGHT TO YOU BY WWW.XD-HS2000.COM
YOUR SOURCE FOR INFORMATION AND PRODUCTS XD.**

- 1 • Make sure fingers are off the trigger and outside of the trigger guard and the pistol is pointed in a safe direction at all times.
- 2 • **REMOVE MAGAZINE** - Depress the magazine button release and remove the magazine from the magazine well.
- 3 • **UNLOADING** - Pull the slide rearward one or more times to insure the chamber is empty. Watch for a live round or empty case to be ejected. Pull slide rearward and lock it with the slide catch lever holding the side open.
- 4 • **INSPECT CHAMBER** - Inspect chamber for the presence of a live round or empty case. Visually-View chamber through open ejection port. Physically - Insert index finger in chamber and feel for the presence of a round or cartridge case in the chamber.
- 5 • Remove any live rounds or empty cases from the chamber or from within the firearm or magazine before handling the firearm further.

This instruction manual should always accompany this pistol and be transferred with it upon change of ownership. Service Policy If you have questions concerning the performance or servicing of your pistol, please write or call:



HS America, LLC
5005 Chapman Highway
Knoxville, Tennessee 37920
Phone: 865-573-0065
Fax: 865-579-0937
www.hsarms.com
e-mail: defence@tds.net

***If you do not understand the instructions for operating your pistol,
it is your responsibility to call our service department:
Phone before using your firearm.***